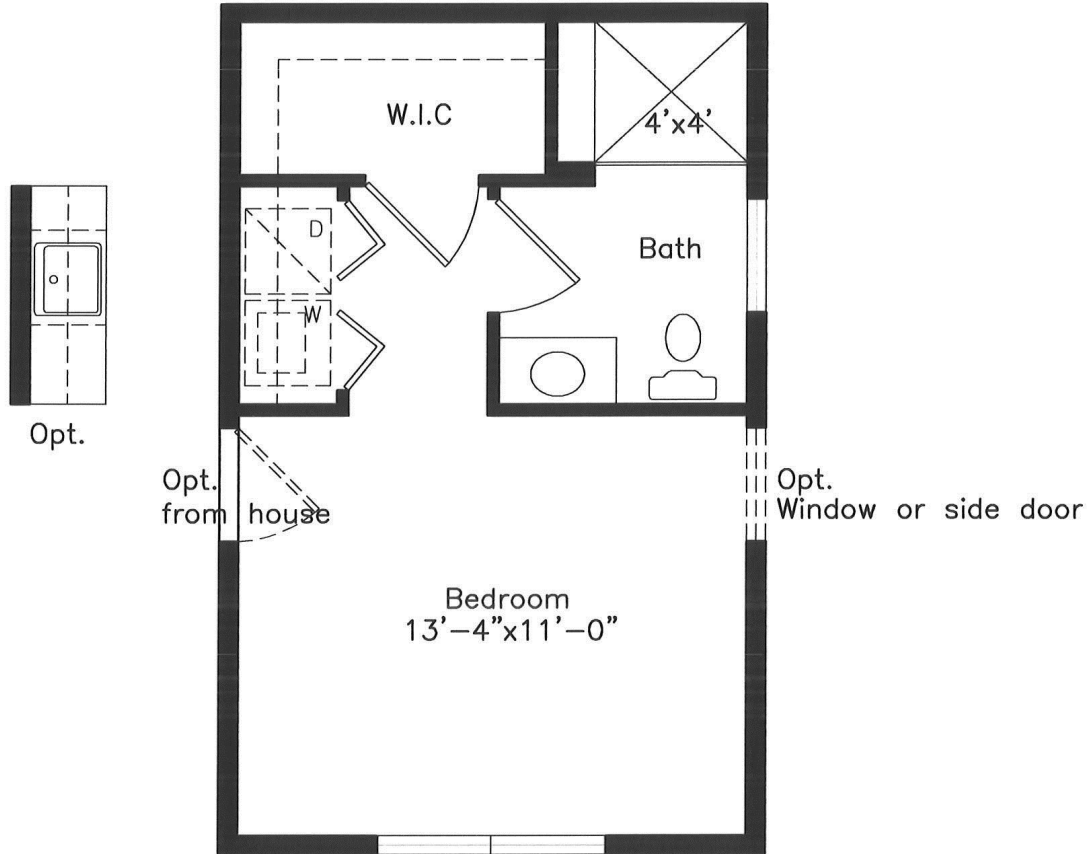


In-Law Suite Options

322 Sq. Ft Option



322 sq. ft In-Law Suite

Features

- Includes full bath with 4x4 shower and seat
- Washer/dryer hook-up or optional kitchenette
- Integrates into most floor plans on the non-garage side-can also incorporate space from main house.

Pricing based on (e) series

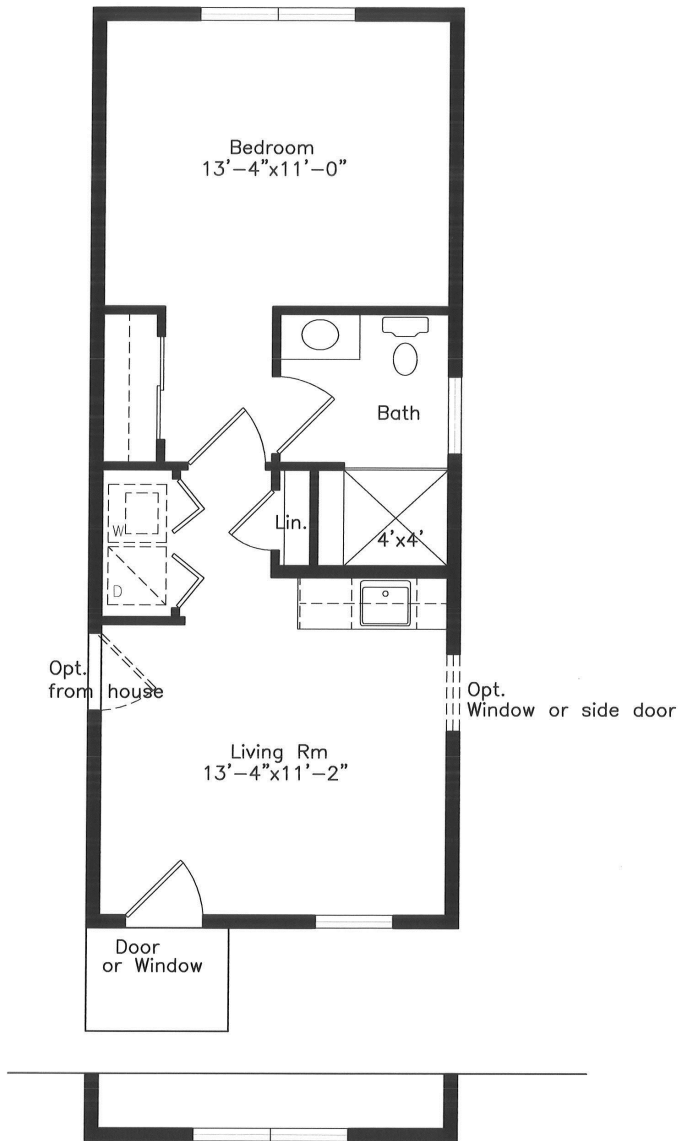
May require upgraded HVAC, 2nd zone and upgraded on-site septic system

See site agent for details.

Rotell(e)^{Studio}
a home that fits your everything



512 Sq. Ft Option with Kitchenette



512 sq. ft In-Law Suite

Features

- Includes full bath with 4x4 shower and seat
- Washer/dryer hook-up
- Kitchenette
- Integrates into most floor plans on the non-garage side-can also incorporate space from main house.

Pricing based on (e) series

May require upgraded HVAC, 2nd zone and upgraded on-site septic system

See site agent for details.

Notice: We have made our best effort to insure this sales brochure is a good representation of the in-law suite options we offer. Please note, this is for marketing purposes. This is not part of our legal contract and we reserve the right to make changes, without notice or obligation. Windows, doors, and room sizes, ceilings, and garage location may vary depending on the options and elevation selected. Garage placement dependant upon floor plan. Please see site agent for details. *Revised 8/1/17*