

TRANSITIONS

Farmhouse Elevation



Shown with the following options: extended front porch with metal with optional 8x8 porch posts, sidelights and transom on front door, louver vent on reverse gable, stone water table on garage, and light above garage door.

Craftsman Elevation



Shown with the following options: reverse gable porch with metal roof, tapered porch posts on stone post piers, pent roof on garage, cedar shake on garage gable, attic window, brackets, second reverse gable with pent roof, stone water table, 3 car side entry garage, and window on garage gable.

Traditional Elevation

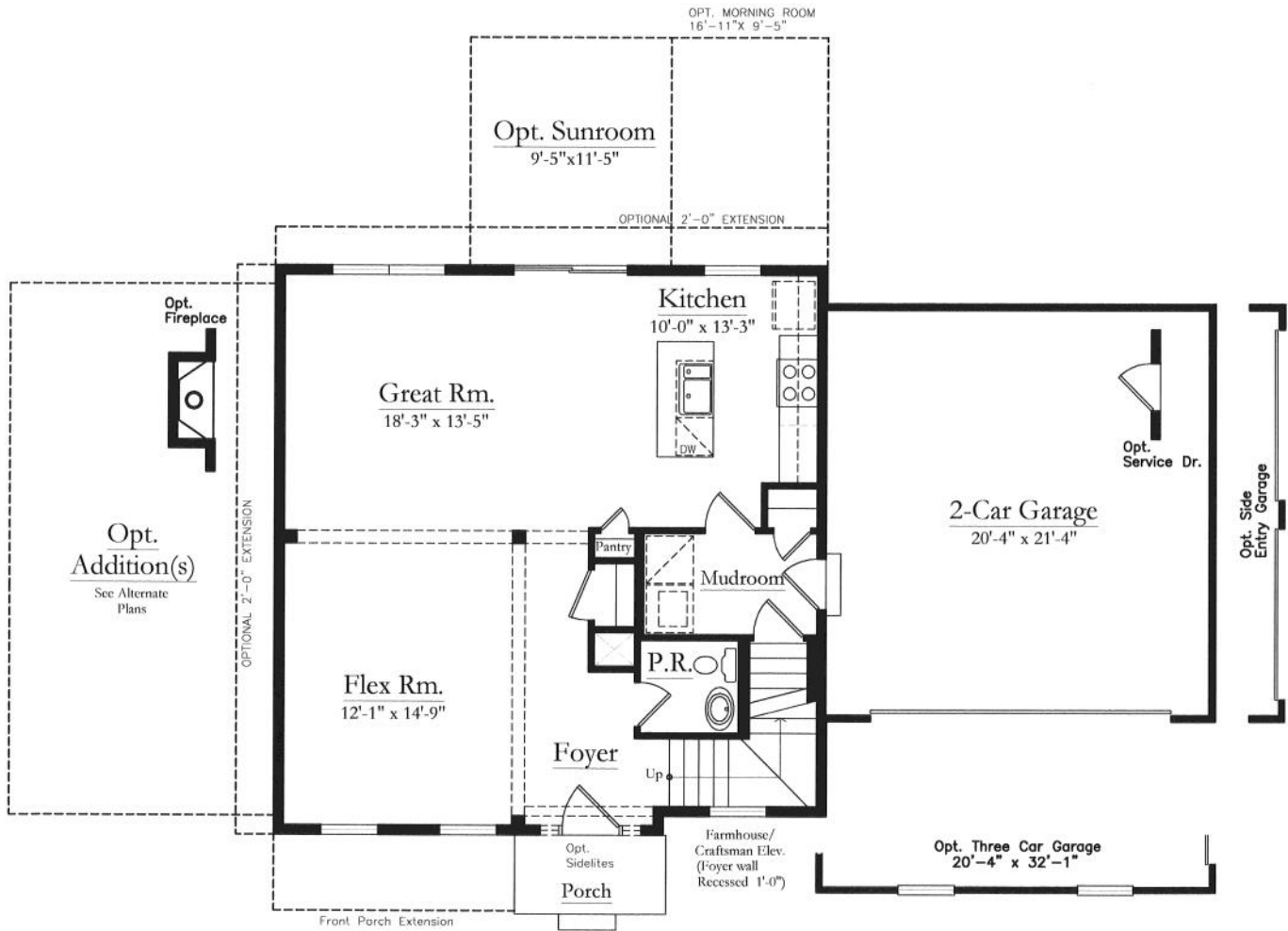


Shown with the following options: reverse gable front porch with 8x8 posts, upgraded trim around front door, extended stone front, roof dormers, stone water table, pent roof on garage, window on garage, side entry 3 car garage.

Please note: artist's renderings may show additional options not noted. Variations in the field will exist. Please see site agent for details.



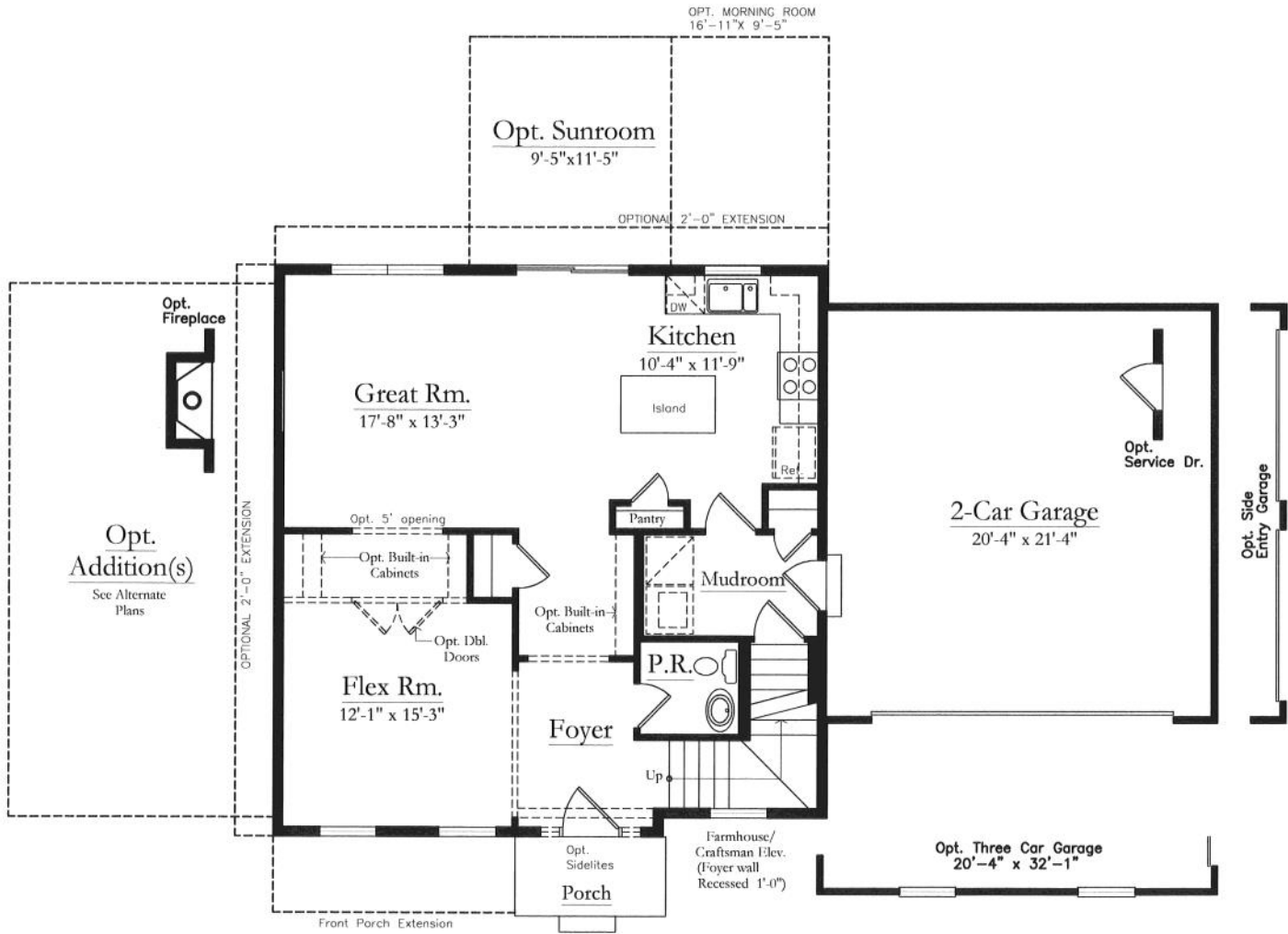
Main Floor-URBAN



Transitions-Urban

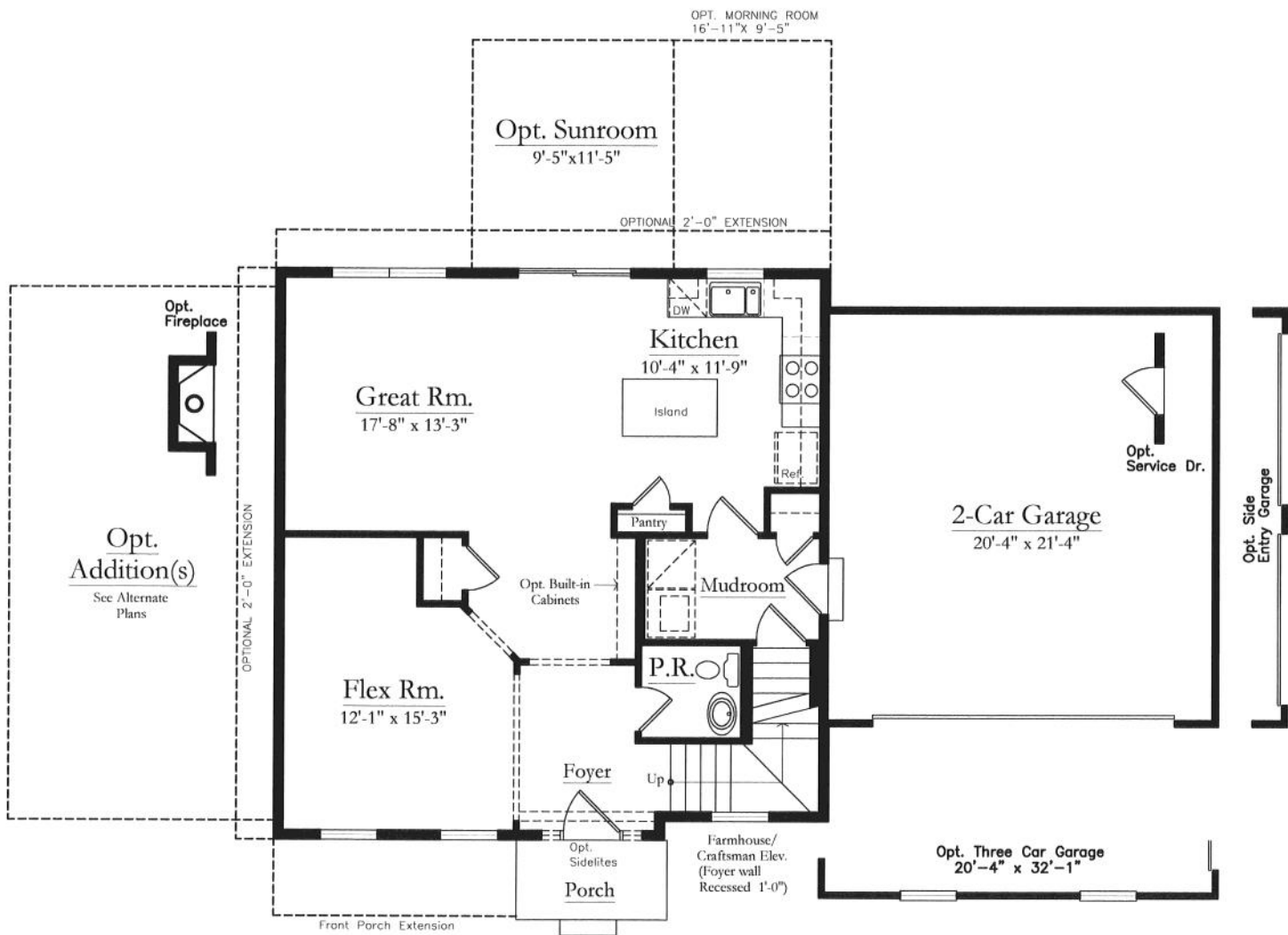
Notice: We have made our best effort to insure this brochure is a good representation of the model homes that we offer. Please note, this brochure is for marketing purposes. This is not part of our legal contract and we reserve the right to make changes, without notice or obligation. Windows, doors, and room sizes, and ceilings may vary depending on the options and elevation selected.

Main Floor-VINTAGE



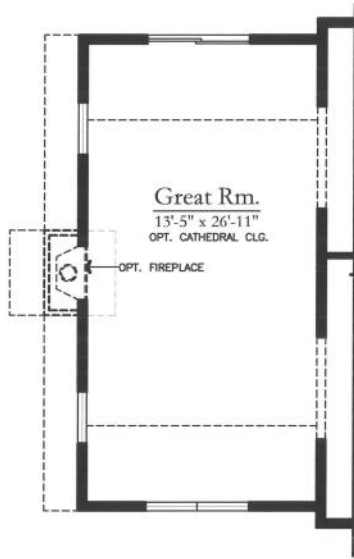
Transitions-Vintage

Notice: We have made our best effort to insure this brochure is a good representation of the model homes that we offer. Please note, this brochure is for marketing purposes. This is not part of our legal contract and we reserve the right to make changes, without notice or obligation. Windows, doors, and room sizes, and ceilings may vary depending on the options and elevation selected.



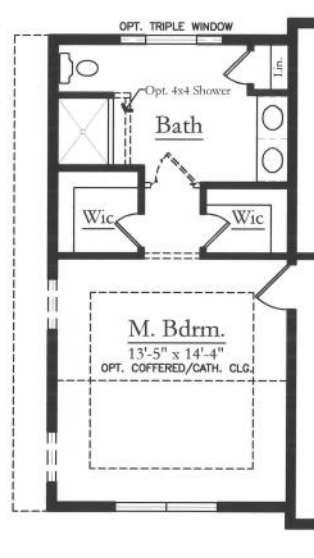
Transitions-Professional

Notice: We have made our best effort to insure this brochure is a good representation of the model homes that we offer. Please note, this brochure is for marketing purposes. This is not part of our legal contract and we reserve the right to make changes, without notice or obligation. Windows, doors, and room sizes, and ceilings may vary depending on the options and elevation selected.



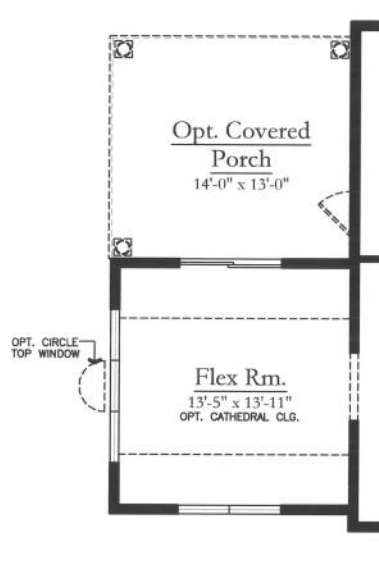
FIRST FLOOR PLAN

Optional Great Room
 Scale - Not To Scale
 392 S.F. - LIVING



FIRST FLOOR PLAN

Optional First Floor Master Bedroom
 Scale - Not To Scale
 392 S.F. - LIVING

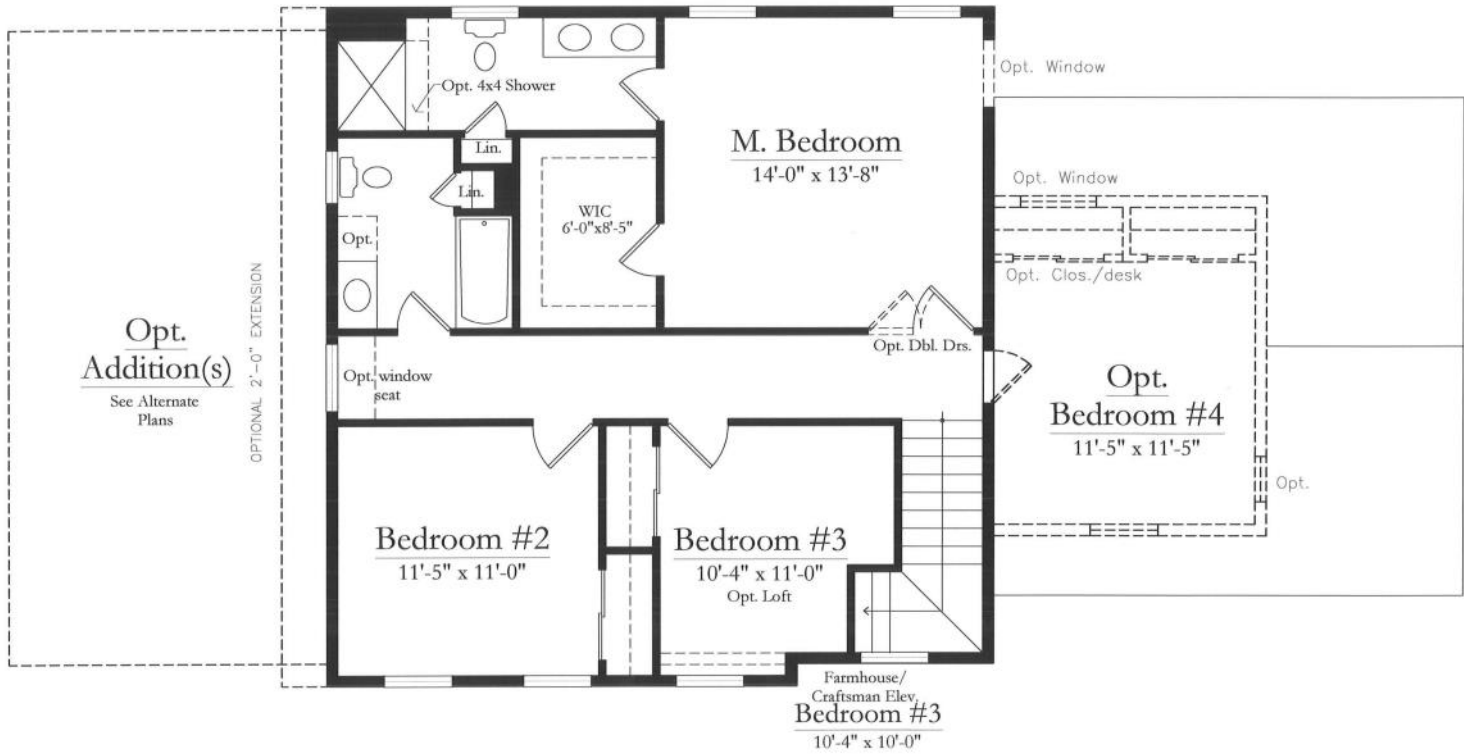


FIRST FLOOR PLAN

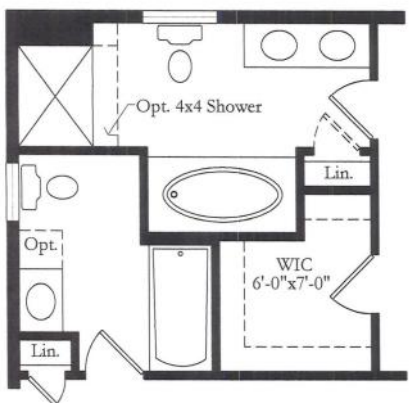
Optional Flex Rm w/ Opt. Covered Porch
 Scale - Not To Scale
 210 S.F. - LIVING

Notice: We have made our best effort to insure this brochure is a good representation of the model homes that we offer. Please note, this brochure is for marketing purposes. This is not part of our legal contract and we reserve the right to make changes, without notice or obligation. Windows, doors, and room sizes, and ceilings may vary depending on the options and elevation selected.

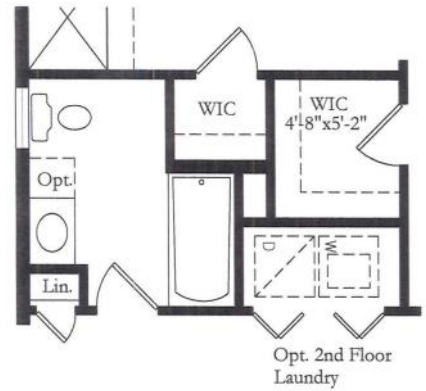
Upper Floor



SECOND FLOOR PLAN
Traditional/Federal



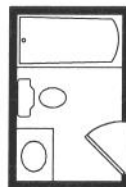
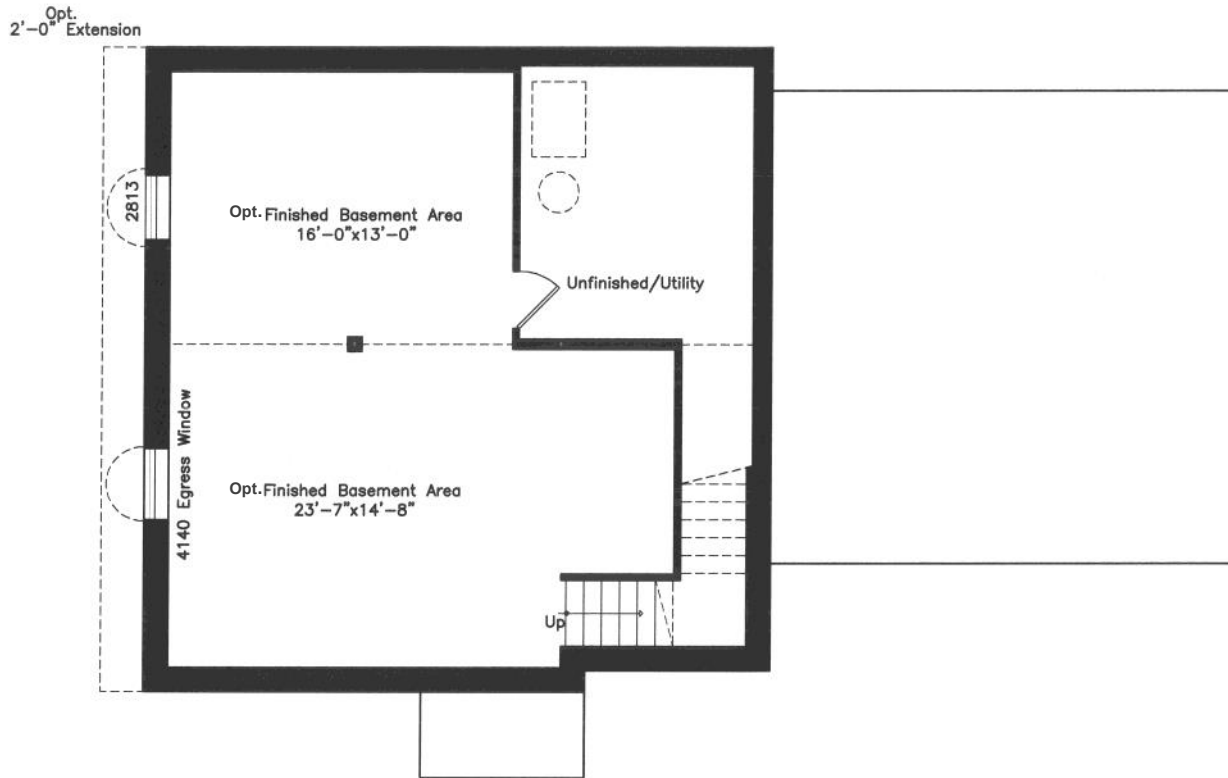
SECOND FLOOR PLAN
Opt. Owner's Upgraded Bath



SECOND FLOOR PLAN
Opt. 2nd Floor Laundry

Notice: We have made our best effort to insure this brochure is a good representation of the model homes that we offer. Please note, this brochure is for marketing purposes. This is not part of our legal contract and we reserve the right to make changes, without notice or obligation. Windows, doors, and room sizes, and ceilings may vary depending on the options and elevation selected.

Lower Level



OPT. FULL BATH



OPT. POWDER ROOM



Notice: We have made our best effort to insure this brochure is a good representation of the model homes that we offer. Please note, this brochure is for marketing purposes. This is not part of our legal contract and we reserve the right to make changes, without notice or obligation. Windows, doors, and room sizes, and ceilings may vary depending on the options and elevation selected.