

Taylor



2 STORY



3,517+



4



2 1/2



2 - 3



63' x 41'

DESIGN FEATURES

OPEN CONCEPT LIVING

CUSTOM BUILT-INS

MULTIPLE ELEVATIONS STYLES

TWO STORY FOYER

ELEGANT OWNER'S SUITE

SECONDARY BEDROOM SUITE

CRAFTSMAN



TRADITIONAL



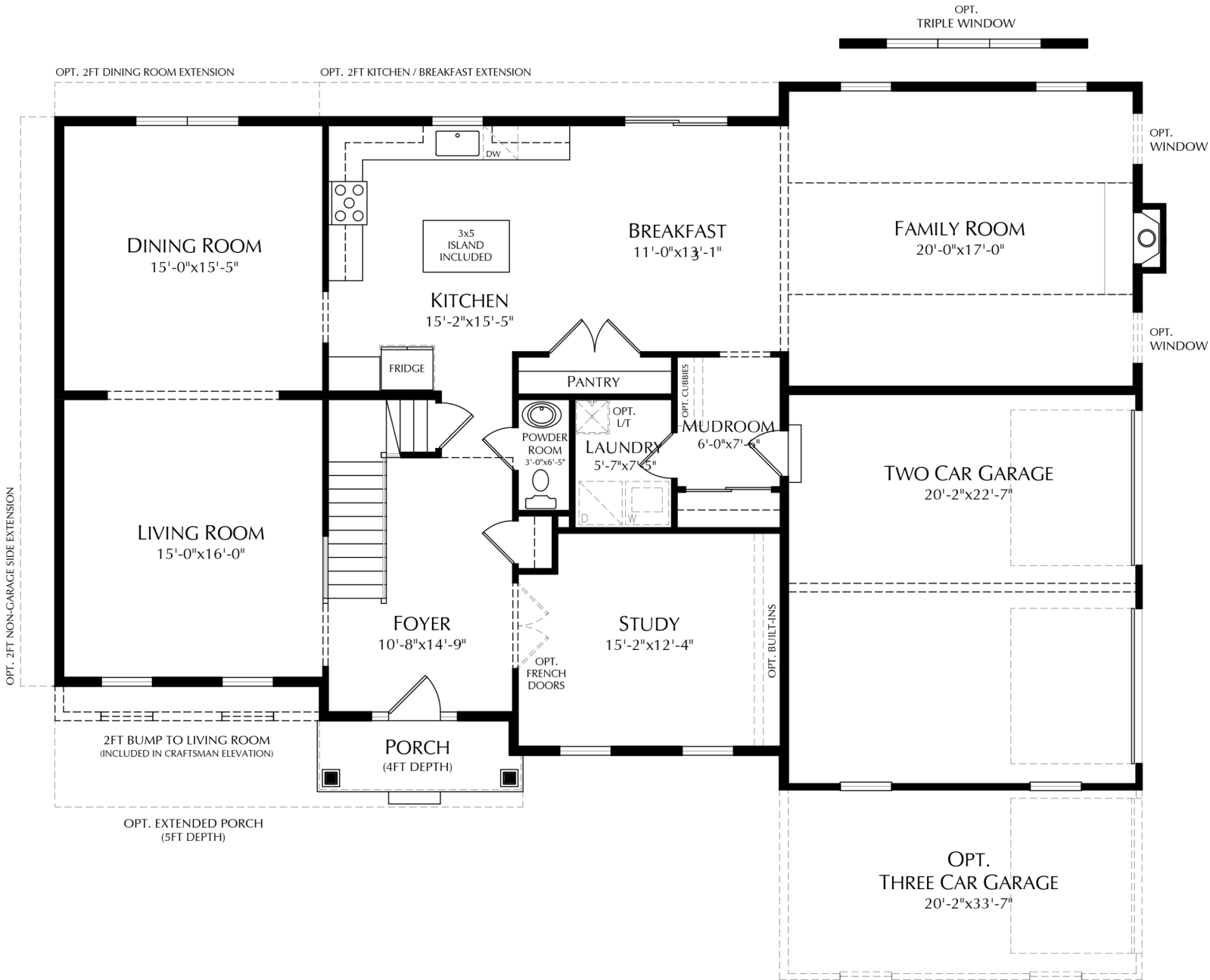
MANOR



Notice: Artist renderings may show additional options not noted or not included in the elect series. Variations in the field will exist. Landscaping is not included. Please see site agent for details. The following architectural designs are intended for informational and illustrative purposes only. Replication or use of these designs without proper authorization or professional consultation may violate applicable laws, regulations, or intellectual property rights.

Taylor

FIRST FLOOR



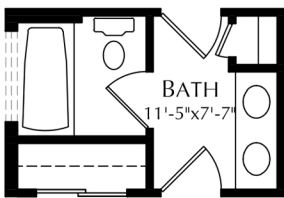
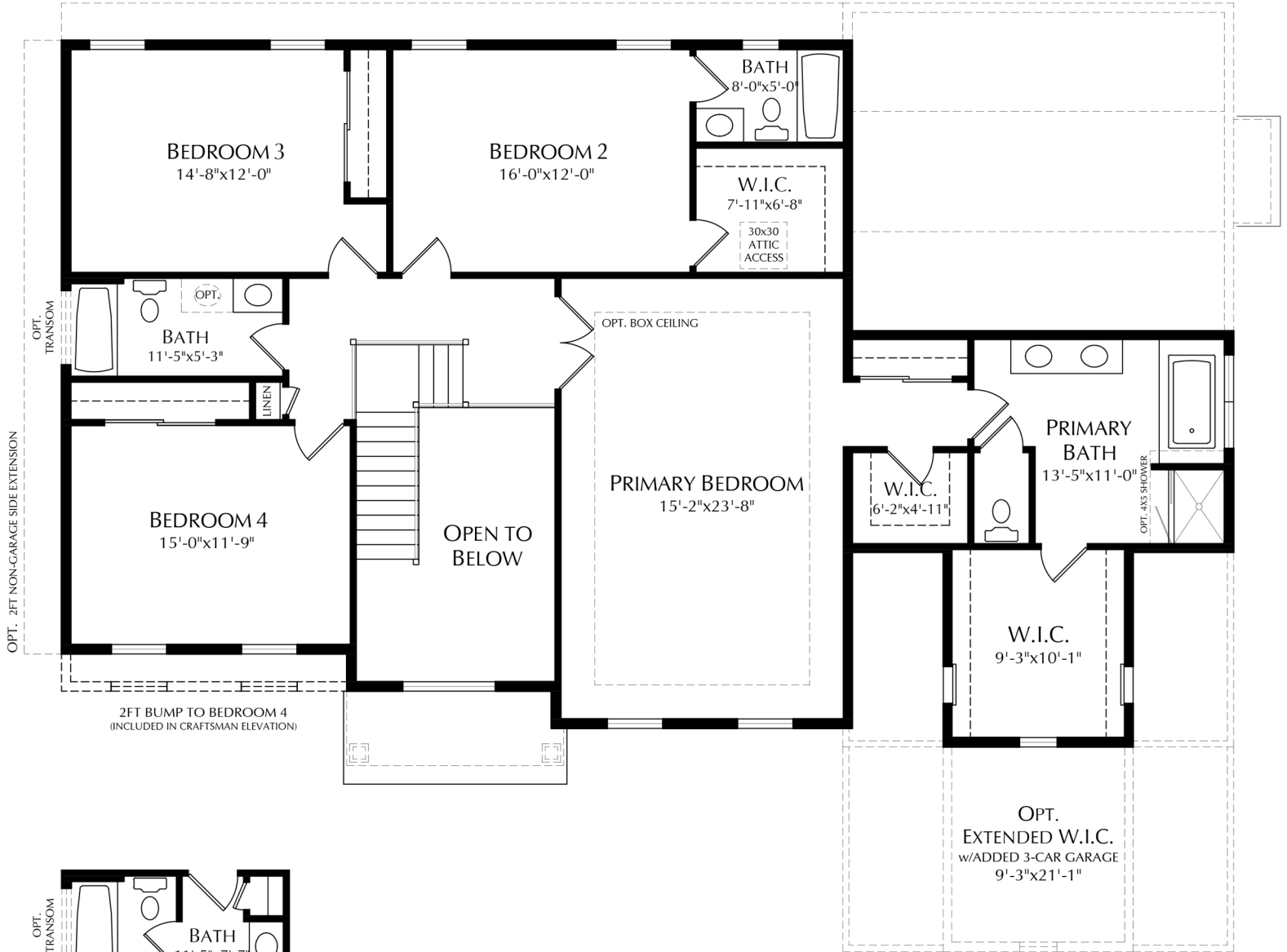
Notice: We have made our best effort to ensure this brochure is a good representation of the model homes we offer. Please note, this brochure is for marketing purposes. This is not part of our legal contract and we reserve the right to make changes, without notice or obligation. Windows, doors, room sizes and ceilings may vary depending on the options and elevation selected. The following architectural designs are intended for informational and illustrative purposes only. Replication or use of these designs without proper authorization or professional consultation may violate applicable laws, regulations, or intellectual property rights.

1/1/2024

Taylor

SECOND FLOOR

OPT. 2FT SECOND FLOOR EXTENSION (APPLIES TO ALL FLOORS)



OPT. J&J BATH
11'-5" x 7'-7"

Notice: We have made our best effort to ensure this brochure is a good representation of the model homes we offer. Please note, this brochure is for marketing purposes. This is not part of our legal contract and we reserve the right to make changes, without notice or obligation. Windows, doors, room sizes and ceilings may vary depending on the options and elevation selected. The following architectural designs are intended for informational and illustrative purposes only. Replication or use of these designs without proper authorization or professional consultation may violate applicable laws, regulations, or intellectual property rights.

1/1/2024