

Wellesley



2 STORY



2,346 +



4



2 1/2+



2



44' x 43'-6"

DESIGN FEATURES

OPEN CONCEPT LIVING
LARGE WALK-IN PANTRY
MULTIPLE ELEVATIONS STYLES

BRIGHT FOYER
GAS/ELECTRIC FIREPLACE
ELEGANT OWNER'S SUITE

CRAFTSMAN



TRADITIONAL



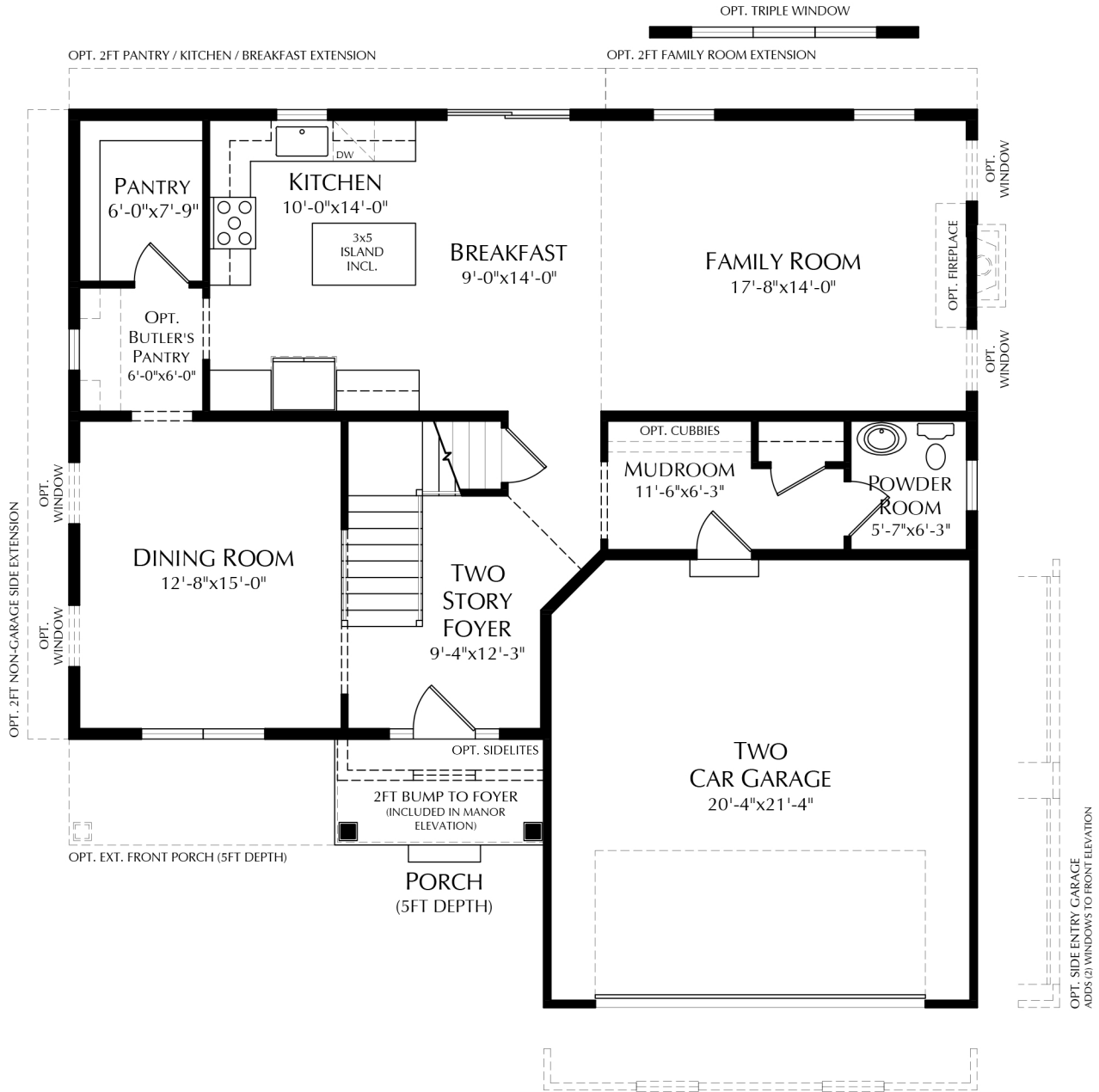
MANOR



Notice: Artist renderings may show additional options not noted or not included in the elect series. Variations in the field will exist. Landscaping is not included. Please see site agent for details. The following architectural designs are intended for informational and illustrative purposes only. Replication or use of these designs without proper authorization or professional consultation may violate applicable laws, regulations, or intellectual property rights.

Wellesley

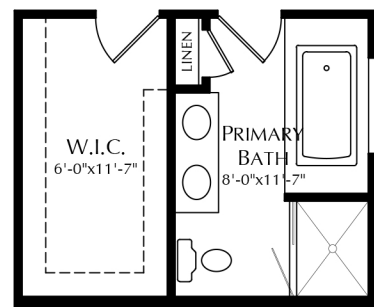
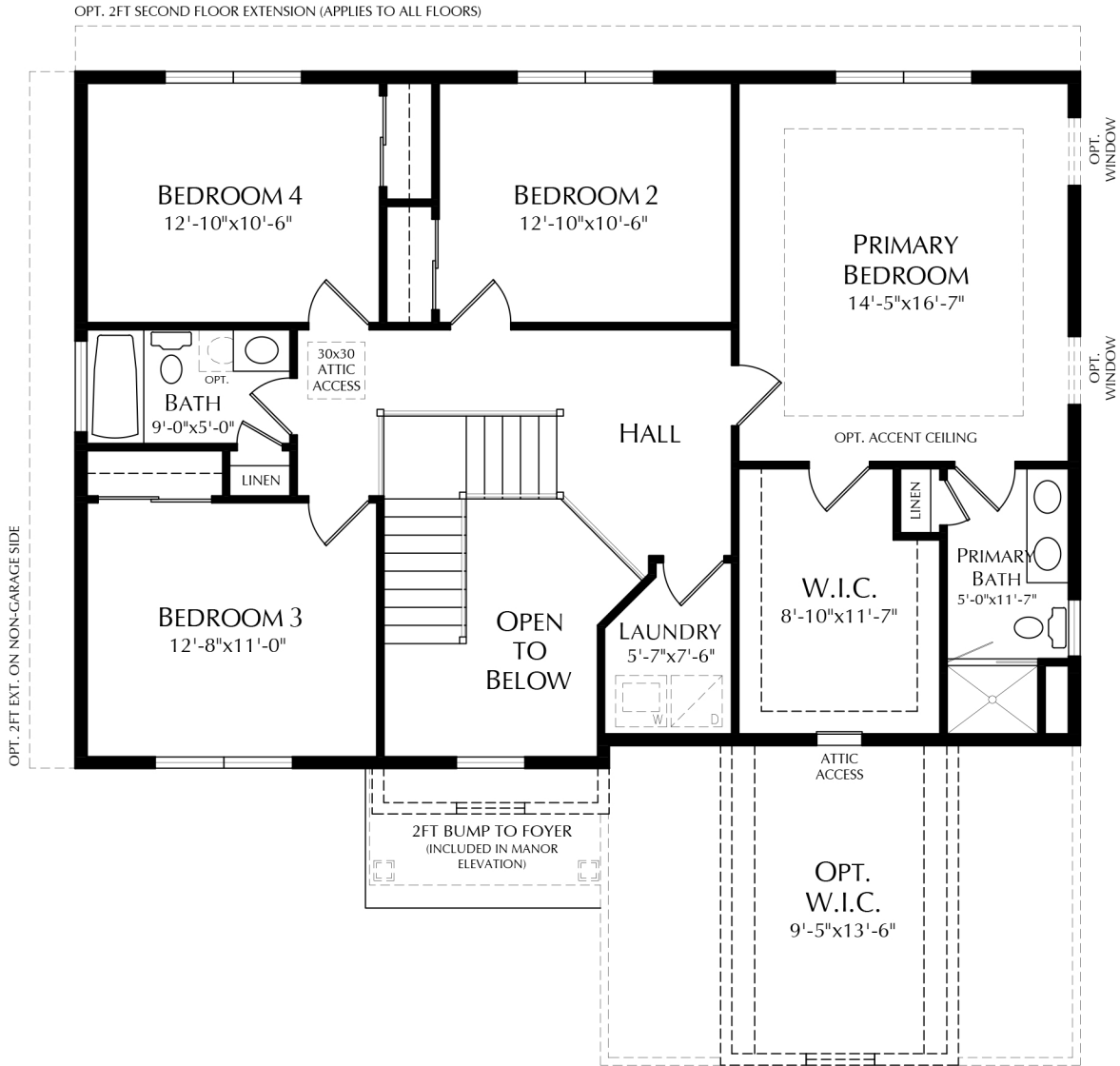
FIRST FLOOR



Notice: We have made our best effort to ensure this brochure is a good representation of the model homes we offer. Please note, this brochure is for marketing purposes. This is not part of our legal contract and we reserve the right to make changes, without notice or obligation. Windows, doors, room sizes and ceilings may vary depending on the options and elevation selected. The following architectural designs are intended for informational and illustrative purposes only. Replication or use of these designs without proper authorization or professional consultation may violate applicable laws, regulations, or intellectual property rights.

Wellesley

SECOND FLOOR



OPT. PRIMARY BATH

Notice: We have made our best effort to ensure this brochure is a good representation of the model homes we offer. Please note, this brochure is for marketing purposes. This is not part of our legal contract and we reserve the right to make changes, without notice or obligation. Windows, doors, room sizes and ceilings may vary depending on the options and elevation selected. The following architectural designs are intended for informational and illustrative purposes only. Replication or use of these designs without proper authorization or professional consultation may violate applicable laws, regulations, or intellectual property rights.