

# Blakesley

Studio  
**Rotell(e)**<sup>TM</sup>  
a home that fits your everything



2 STORY



2,877 +



3 - 5



2 1/2 - 3 1/2



2 - 3



71' x 55'

## DESIGN FEATURES

LOFT OVERLOOKING FAMILY ROOM

OPEN CONCEPT LAYOUT

MULTIPLE ELEVATIONS STYLES

POCKET OFFICE

GAS/ELECTRIC FIREPLACE

FIRST FLOOR OWNER'S SUITE

**MODERN FARMHOUSE**

**TRADITIONAL**

**CRAFTSMAN**



**Notice:** Artist renderings may show additional options not noted or not included in the elect series. Variations in the field will exist. Landscaping is not included. Please see site agent for details. The following architectural designs are intended for informational and illustrative purposes only. Replication or use of these designs without proper authorization or professional consultation may violate applicable laws, regulations, or intellectual property rights.

Studio  
**Rotell(e)**

# Blakesley

## FIRST FLOOR

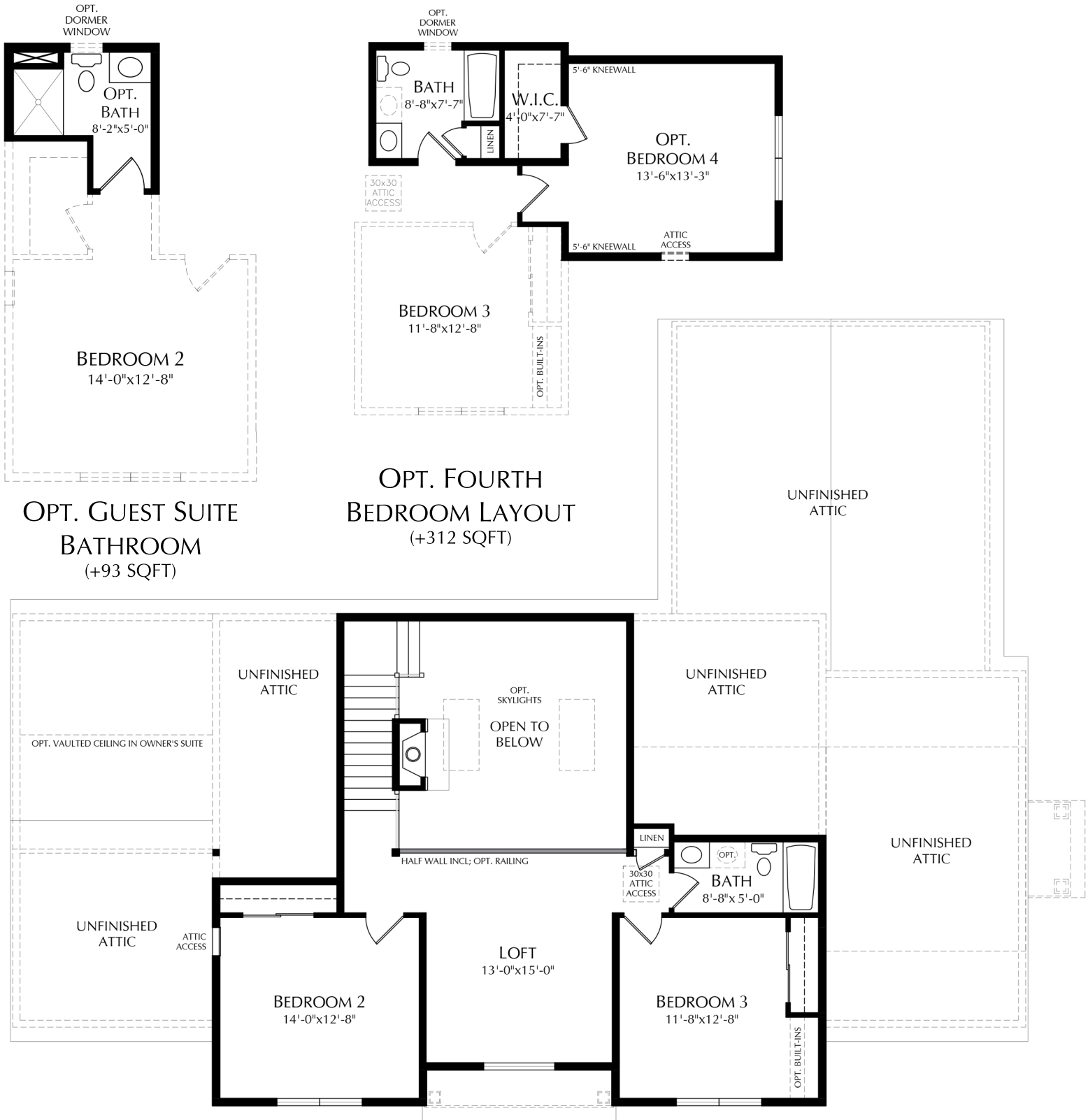


**Notice:** We have made our best effort to ensure this brochure is a good representation of the model homes we offer. Please note, this brochure is for marketing purposes. This is not part of our legal contract and we reserve the right to make changes, without notice or obligation. The following architectural designs are intended for informational and illustrative purposes only. Replication or use of these designs without proper authorization or professional consultation may violate applicable laws, regulations, or intellectual property rights.

1/1/2024

# Blakesley

SECOND FLOOR



**Notice:** We have made our best effort to ensure this brochure is a good representation of the model homes we offer. Please note, this brochure is for marketing purposes. This is not part of our legal contract and we reserve the right to make changes, without notice or obligation. The following architectural designs are intended for informational and illustrative purposes only. Replication or use of these designs without proper authorization or professional consultation may violate applicable laws, regulations, or intellectual property rights.